



CONDUCTIVE MODELLING CLAY



I have already told you how to make an LED light up with a lemon. But did you know that you can also use modelling clay to do the same thing? **Conductive modelling clay**. I learned that from the "Little Engineers" www.kleine-ingenieure.de. I'll show you here how to do it.

YOU NEED CONDUCTIVE MODELLING CLAY:

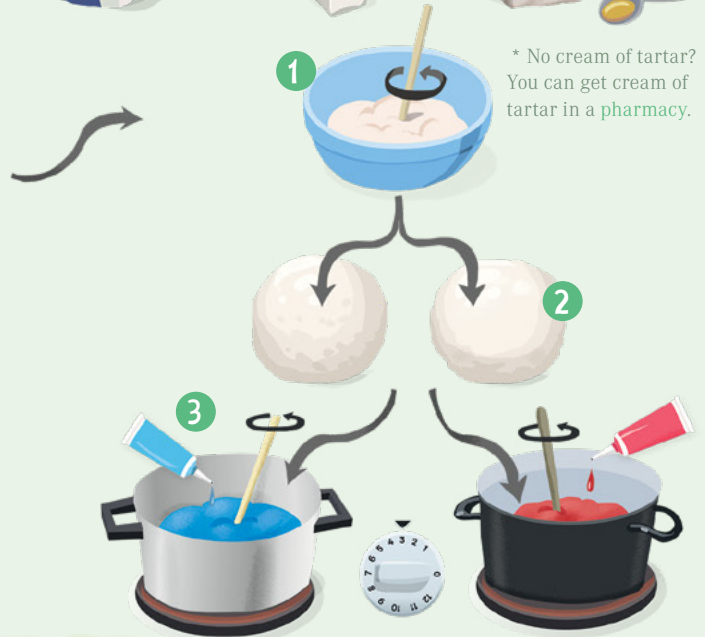
- ▶ 210 g flour ▶ 140 ml water ▶ 70 g salt ▶ 60 g cream of tartar *
- ▶ 2 tbsp vegetable oil
- ▶ food colouring blue and/or red

HERE'S WHAT TO DO:

1. Mix everything except the food colouring in a **bowl**.
2. Divide the mixture up into two pieces. 3. Add the food colouring and then **stir** it in on a low heat. 4. Let the **lumps** cool down and then **knead** them with your hands.
5. Keep it fresh.



* No cream of tartar? You can get cream of tartar in a pharmacy.



YOU NEED INSULATING MODELLING CLAY:

- ▶ 210 g flour ▶ 80 g sugar
- ▶ 6 tbsp vegetable oil
- ▶ 120 ml water
- ▶ food colouring yellow

HERE'S WHAT TO DO:

1. Mix everything except the food colouring in a bowl.
2. Add the food colouring.
3. Knead the mixture.
4. Keep it fresh.

The clay conducts the current because of the little grains of salt that are released in the water.



VOCABULARY

conductive modelling clay	stromleitend
flour	Knete
cream of tartar	Mehl
tbsp = tablespoon	Weinsteinbackpulver
food colouring	Esslöffel
bowl	Lebensmittelfarbe
stir	Schüssel
lump	rühren
knead	Klumpen
pharmacy	durchkneten
insulating	Apotheke
grain of salt	isolierend
circuit	Salzkörnchen
	Schaltung, Schaltkreis

On the Little Engineers' website you will learn how to build electric **circuits** with the modelling clay, a battery, two cables and some LEDs.

▶ kleine-ingenieure.de/leitende-knete/stromkreise

Or you can build a little electric doll and make it light up. Send in your photo until 20.11.2010 to rudi@vdini-club.de and you could maybe win an **electronic model kit**.

